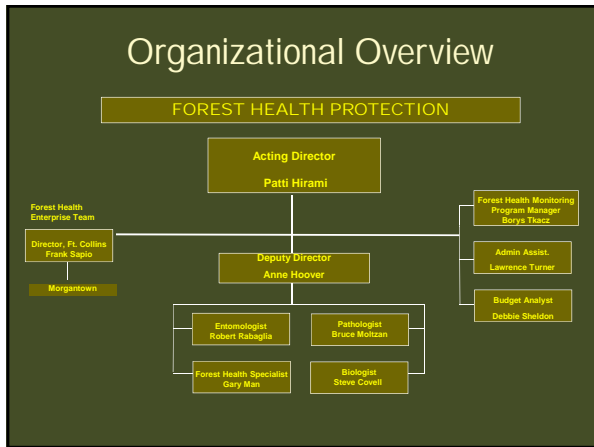
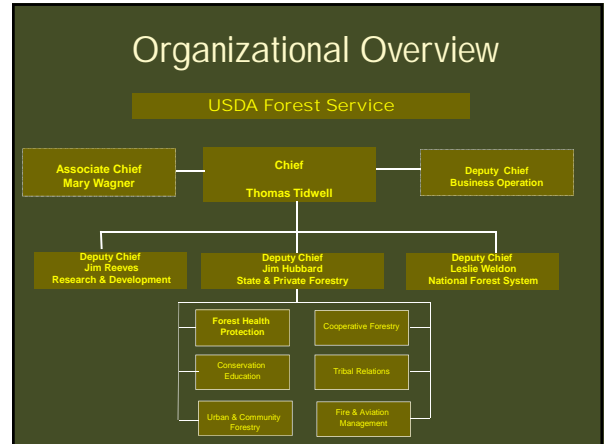


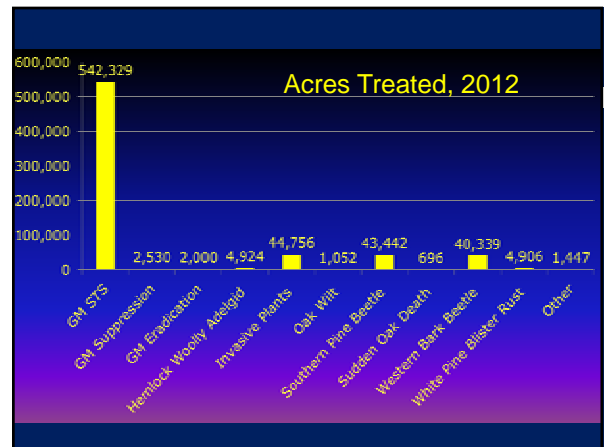
Forest Service Update

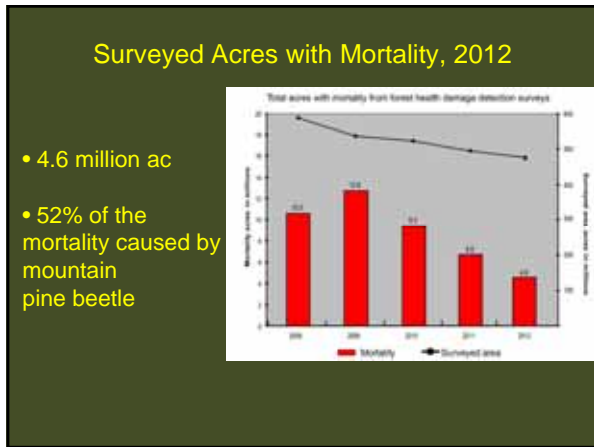
Bob Rabaglia
USDA Forest Service
Forest Health Protection
Arlington, VA
brabaglia@fs.fed.us



Forest Health Protection

- **Technical Assistance**
- **Survey & Monitoring**
- **Treatments**
- **Methods/Tech Development**





Mountain Pine Beetle - *Dendroctonus ponderosae*

- ⚡ Lodgepole pine forests affected most
- ⚡ ~ 40 million ac in 15 yrs
- ⚡ Concentrate efforts to treat high value areas – campgrounds, rec. areas, watersheds, human habitations

Southern Pine Beetle - *Dendroctonus frontalis*

1999-2002 outbreak caused \$1.5 billion in losses and killed trees on >1 million acres

Southern Pine Beetle

Southern Pine Beetle - *Dendroctonus frontalis*

SPB Prevention Program

Work with landowners and forests managers
 To encourage thinning forests to make them more resistant to beetle outbreaks

Treated >1 million ac in 10 years

Gypsy Moth

Forest Service – APHIS Gypsy Moth Strategy

- Eradication
- Suppression
- Slow-the-spread



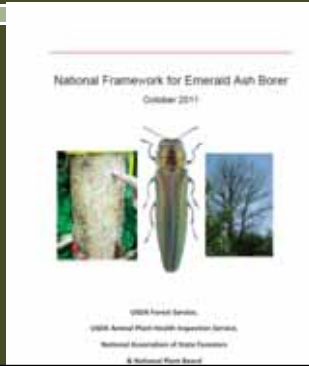
Emerald Ash Borer



Emerald Ash Borer

EAB Framework

- Aligns roles and responsibilities of agencies
- Forest Service provides tech assistance for survey, management, utilization, tree inventory, outreach, methods development & research



Forest Service EAB expenditures, 2011-2013

Prevention/Preparations	\$ 998,000
Survey/Inspection	\$ 348,000
Management/Control	\$ 2,289,000
Recovery/Rehabilitation	\$ 3,781,000
Outreach/Education	\$ 250,000
Research & Methods Development:	\$ 4,785,000
Biorational	\$ 1,723,200
Survey Methodology	\$ 1,385,000
Insecticide Research	\$ 485,000
Resistance, Management ...	\$ 611,000
Other R&D	\$ 621,000
Total	\$ 12,697,000

Thousand Cankers Disease



- Native insect /disease complex acting invasive on black walnut
- Now occurs in 13 states, most recently found in NC; fungus only.
- 16 States have enacted TCD Regulations
- Developing silvicultural prescriptions and heat treatment suggestions



Phloem Canker

Forest Health Protection Budget

FY 2013

- Continuing Resolution \$111.9 million
- Sequestration + Rescissions \$ 7.0 million
- Late authorization...

FY 2014

- President's Budget \$104 million
- Sequestration + Rescissions ??
- Continuing Resolution ??

Forest Health Protection Budget, FY2013

- Core areas:
 - Technical Assistance (Funding to Regions and states)

Forest Health Protection Budget, FY2013

- Core areas:
 - Technical Assistance (Funding to Regions and states)
 - Survey/Monitoring (EDRR, SOD stream baiting, TCD...)

Forest Health Protection Budget, FY2013

- Core areas:
 - Technical Assistance (Funding to Regions and states)
 - Survey/Monitoring (EDRR, SOD stream baiting, TCD...)
 - Methods Development (STDP, FSPIAP, Sirex, genetic conservation...)

Forest Health Protection Budget, FY2013

- Core areas:
 - Technical Assistance (Funding to Regions and states)
 - Survey/Monitoring (EDRR, SOD stream baiting, TCD...)
 - Methods Development (STDP, FSPIAP, Sirex, genetic conservation...)
 - Treatments (2013 allocations):
 - Gypsy Moth STS - \$7.75 Million
 - Gypsy Moth Suppression - \$965,000
 - Gypsy Moth Eradication - \$24,000
 - Western bark beetles - \$4.0 Million
 - Southern Pine Beetle - \$3.0 Million
 - Hemlock Woolly Adelgid - \$1.9 Million
 - Invasive Plants - \$1.4 Million
 - Sudden Oak Death - \$1.35 Million