



United States Department of Agriculture



# PPQ Budget Outlook and Program Updates

**Osama El-Lissy**  
**Deputy Administrator**

National Plant Board 87th Annual Meeting  
St. Louis, MO

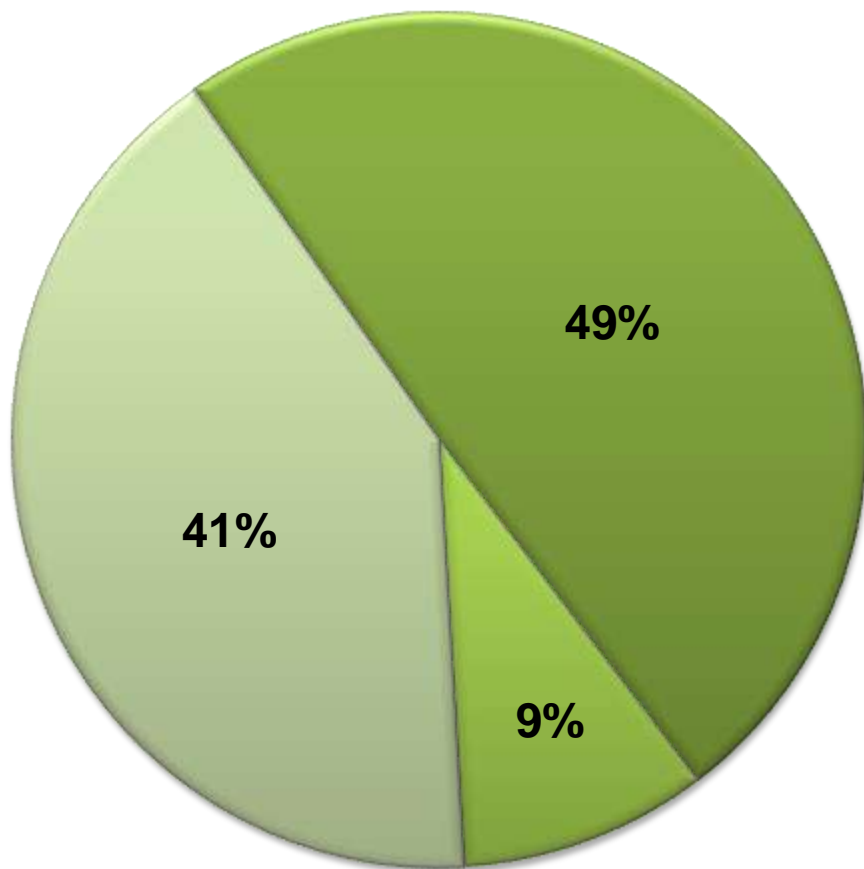


# Budget Outlook

## Topics:

- PPQ Funding Trends FYs 2012-2014
- FY 2015 Budget (President, House, and Senate)
- Farm Bill Section 10.007 Funding
- Program Updates

# FY 2014 Funding Sources



- FY 14 Appropriations
- Farm Bill S 10.007
- User Fees



# APHIS/PPQ Appropriation Trends

Fiscal Years 2012 – 2014, (\$s in 000s)

Plant Protection and Quarantine	FY 2012 Enacted	FY 2013 Enacted (Post Reductions)	FY 2014 Enacted <sup>1</sup>	Net Percent Change 2012-2014
AQI (appropriated)	27,500	26,304	26,900	-2.18%
Cotton Pests	17,848	14,739	12,720	-28.73%
Field Crop and Rangeland	9,068	8,369	8,826	-2.67%
Pest Detection	27,500	25,381	27,446	-0.20%
Plant Protection Methods Development	20,600	19,935	24,549	19.17%
Specialty Crop Pests	153,950	142,087	151,500	-1.59%
Tree & Wood Pests	55,638	52,273	54,000	-2.94%
<b>Total Change from Prior Year</b>	<b>312,104</b>	<b>289,088</b> <b>-7.37%</b>	<b>305,941</b> <b>+5.83%</b>	<b>-1.97%</b>

FY 2014 Plant Methods \$4M increase targeted for NCPN, funded from Farm Bill instead.

<sup>1</sup> This does not include GP 748 (\$20 million for Citrus Greening MAC).

# APHIS/PPQ Appropriation Trends

Fiscal Years 2012 – 2014, (\$s in 000s)

Plant Protection and Quarantine	FY 2012 Enacted	FY 2013 Enacted (Post Reductions)	FY 2014 Enacted <sup>1</sup>	Net Percent Change 2012-2014
AQI (appropriated)	27,500	26,304	26,900	-2.18%
Cotton Pests	17,848	14,739	12,720	-28.73%
Field Crop and Rangeland	9,068	8,369	8,826	-2.67%
Pest Detection	27,500	25,381	27,446	-0.20%
Plant Protection Methods Development	20,600	19,935	24,549	19.17%
Specialty Crop Pests	153,950	142,087	151,500	-1.59%
Tree & Wood Pests	55,638	52,273	54,000	-2.94%
<b>Total Change from Prior Year</b>	<b>312,104</b>	<b>289,088</b> <b>-7.37%</b>	<b>305,941</b> <b>+5.83%</b>	<b>-1.97%</b>

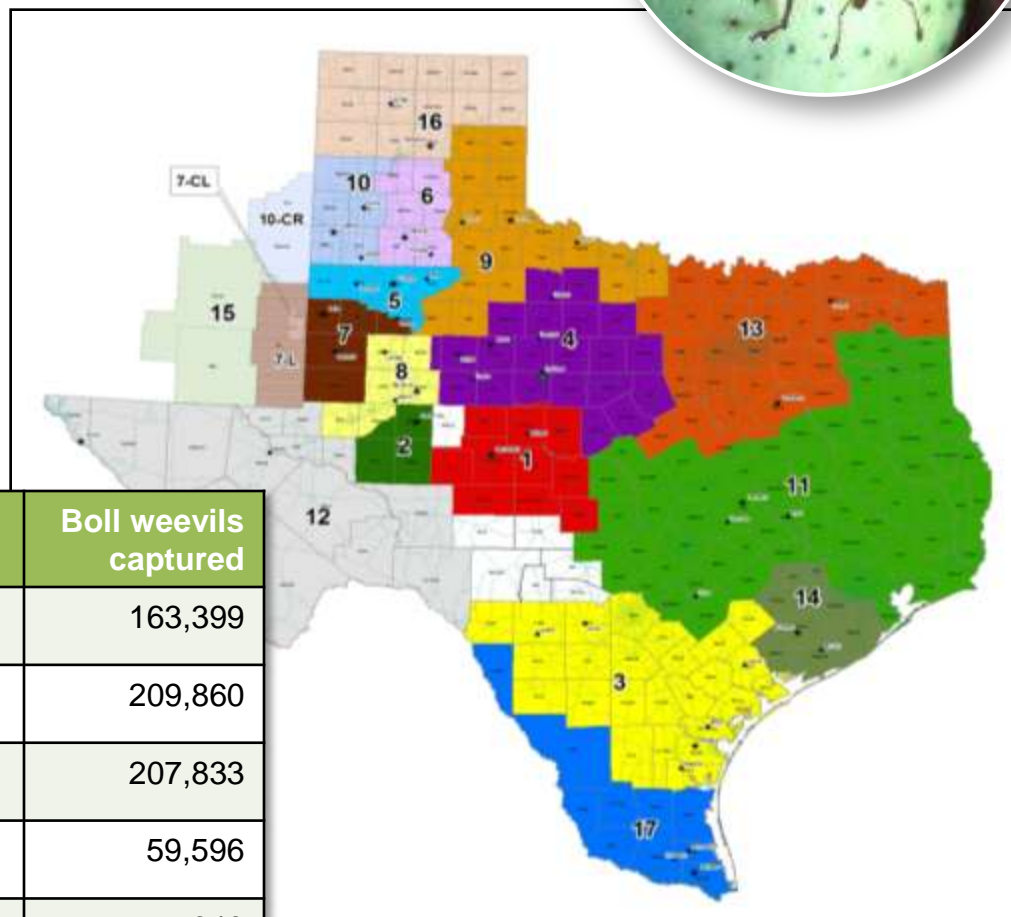
FY 2014 Plant Methods \$4M increase targeted for NCPN, funded from Farm Bill instead.

<sup>1</sup> This does not include GP 748 (\$20 million for Citrus Greening MAC).

# Program Update

## Boll Weevil

- 144,988 acres of cotton planted
- 640 boll weevils captured
- 175, 985 acres sprayed

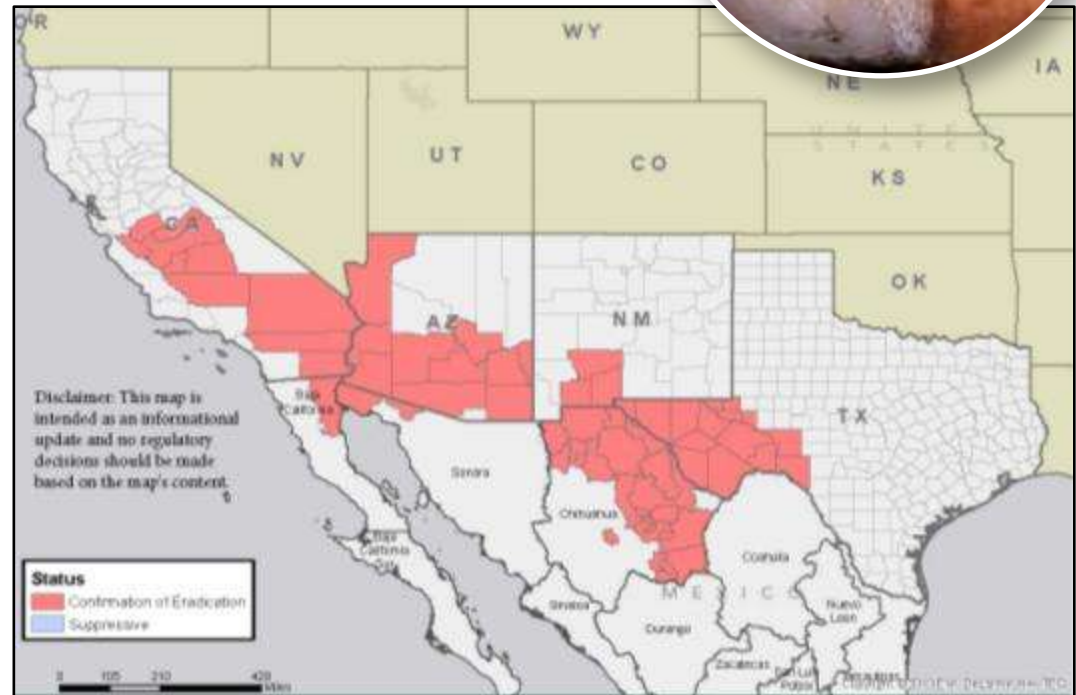


Year	Boll weevils captured
2010	163,399
2011	209,860
2012	207,833
2013	59,596
2014	640

Program Update

# Pink Bollworm

- No pink bollworms captured in 2014
- “Confirmation of eradication” process takes 4 years
- Arizona, Southern California – year 1
- Southern New Mexico, Texas – year 2





# APHIS/PPQ Appropriation Trends

Fiscal Years 2012 – 2014, (\$s in 000s)

Plant Protection and Quarantine	FY 2012 Enacted	FY 2013 Enacted (Post Reductions)	FY 2014 Enacted <sup>1</sup>	Net Percent Change 2012-2014
AQI (appropriated)	27,500	26,304	26,900	-2.18%
Cotton Pests	17,848	14,739	12,720	-28.73%
Field Crop and Rangeland	9,068	8,369	8,826	-2.67%
Pest Detection	27,500	25,381	27,446	-0.20%
Plant Protection Methods Development	20,600	19,935	24,549	19.17%
Specialty Crop Pests	153,950	142,087	151,500	-1.59%
Tree & Wood Pests	55,638	52,273	54,000	-2.94%
<b>Total Change from Prior Year</b>	<b>312,104</b>	<b>289,088</b> <b>-7.37%</b>	<b>305,941</b> <b>+5.83%</b>	<b>-1.97%</b>

FY 2014 Plant Methods \$4M increase targeted for NCPN, funded from Farm Bill instead.

<sup>1</sup> This does not include GP 748 (\$20 million for Citrus Greening MAC).





# Specialty Crop Pests

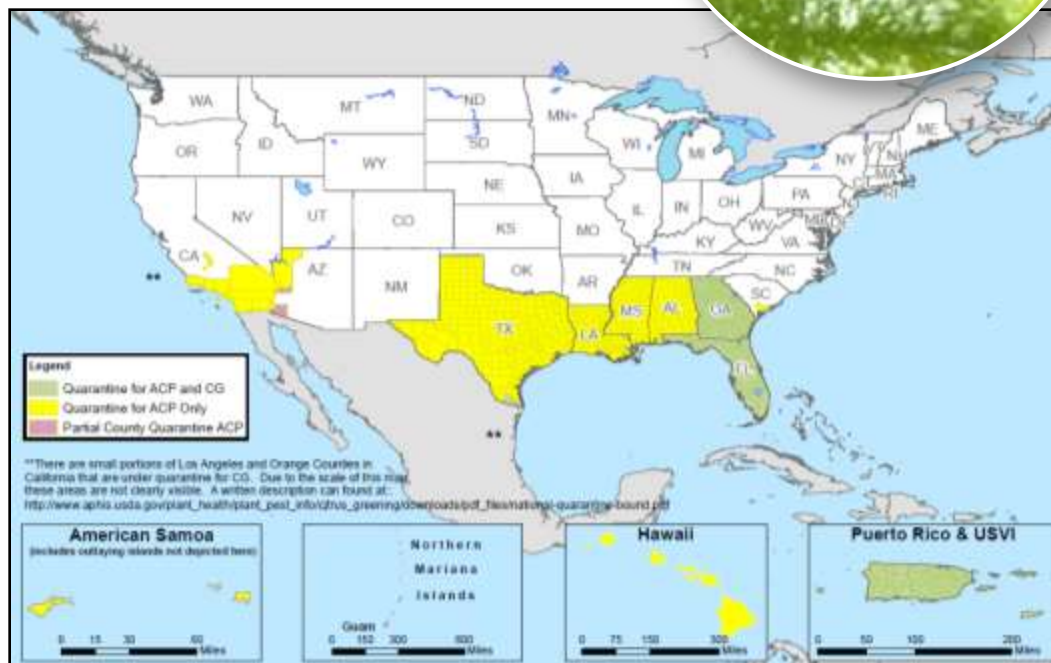
Line Items	FY 2012	FY 2013	% +/-	FY 2014	% +/-
Citrus Health Response Program	44,656	41,200	-8%	44,330	8%
Critical Invasive Pest Response	2,102	1,939	-8%	2,060	6%
European Grapevine Moth	2,500	2,307	-8%	6,598	186%
Fruit Fly	59,920	55,333	-8%	59,640	8%
Golden Nematode	831	767	-8%	951	24%
Glassywinged Sharpshooter	20,277	18,708	-8%	19,100	2%
Light Brown Apple Moth	10,258	9,464	-8%	6,659	-30%
Potato Cyst Nematode	6,215	5,734	-8%	6,318	10%
Plum Pox Virus	2,120	1,956	-8%	2,162	11%
<i>P. Ramorum</i> (SOD)	5,071	4,678	-8%	3,682	-21%
<b>SUBTOTAL</b>	<b>153,950</b>	<b>142,086</b>	<b>-77%</b>	<b>151,500</b>	<b>203%</b>

Program Update

# Citrus Health Response Program



- ACP quarantine area in California and Texas expanded
- HLB quarantine area in Texas expanded
- Implementing biocontrol in Arizona, California, Florida, and Texas
- Implementing area-wide management in Texas

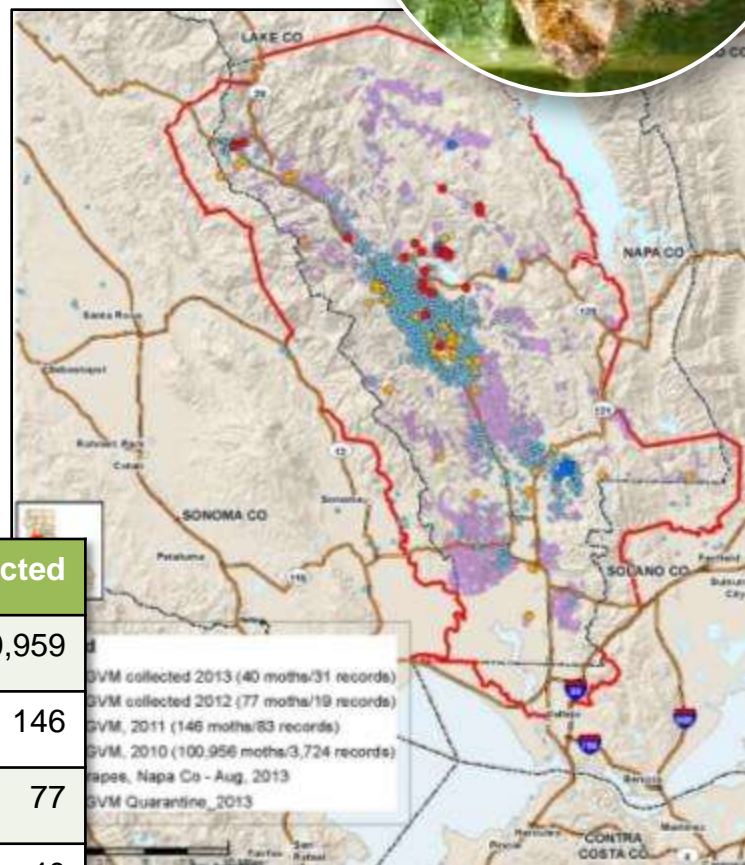




Program Update

# European Grapevine Moth

- One moth detected this year in Sonoma County
- Strong collaboration with California Department of Food and Agriculture, counties, and industry
- Eradication is possible



Year	EGVM Detected
2010	100,959
2011	146
2012	77
2013	40
2014	1

## Program Update

**Fruit Fly**

- California
  - Oriental fruit fly quarantine completed
  - Medfly quarantine started
- Texas
  - 4 quarantines in the Lower Rio Grande Valley
    - 3 for Mexican fruit fly
    - 1 for West Indian fruit fly
- Florida
  - No detections
- New Mexico
  - Wild Mexican fruit fly detected
  - Completed delimitation survey



Program Update

## Potato Cyst Nematodes

- 8,478 PCN-regulated acres in Idaho
- 2,392 acres are infested fields
- Viable nematode cysts no longer detected in 9 of the 22 infested fields due to annual eradication treatments
- No PCN detections outside the quarantine area
- Canada, Japan, Korea, Mexico reopened export markets



Program Update

## Phytophthora ramorum

- Regulatory changes
  - Advance notification requirements
  - Deregulation of non-host nurseries
  - Relieving regulatory burden and enhancing nurseries where *P. ramorum* was detected in last 3 years
- Regulatory trigger = presence of pathogen on host plants, soil, water, potting mixes, and pots
- Regulated nurseries reduced from 3000 to approximately 200



# APHIS/PPQ Appropriation Trends

Fiscal Years 2012 – 2014, (\$s in 000s)

Plant Protection and Quarantine	FY 2012 Enacted	FY 2013 Enacted (Post Reductions)	FY 2014 Enacted <sup>1</sup>	Net Percent Change 2012-2014
AQI (appropriated)	27,500	26,304	26,900	-2.18%
Cotton Pests	17,848	14,739	12,720	-28.73%
Field Crop and Rangeland	9,068	8,369	8,826	-2.67%
Pest Detection	27,500	25,381	27,446	-0.20%
Plant Protection Methods Development	20,600	19,935	24,549	19.17%
Specialty Crop Pests	153,950	142,087	151,500	-1.59%
Tree & Wood Pests	55,638	52,273	54,000	-2.94%
<b>Total Change from Prior Year</b>	<b>312,104</b>	<b>289,088</b> <b>-7.37%</b>	<b>305,941</b> <b>+5.83%</b>	<b>-1.97%</b>

FY 2014 Plant Methods \$4M increase targeted for NCPN, funded from Farm Bill instead.

<sup>1</sup> This does not include GP 748 (\$20 million for Citrus Greening MAC).





# Tree and Wood Pests

Line Items	FY 2012	FY 2013	% +/-	FY 2014	% +/-
Asian Longhorned Beetle	42,991	39,729	-8%	41,618	5%
Emerald Ash Borer	9,727	8,996	-8%	7,849	-13%
Gypsy Moth	2,920	3,548	22%	4,533	28%
<b>SUBTOTAL</b>	<b>55,638</b>	<b>52,273</b>	<b>6%</b>	<b>54,000</b>	<b>20%</b>

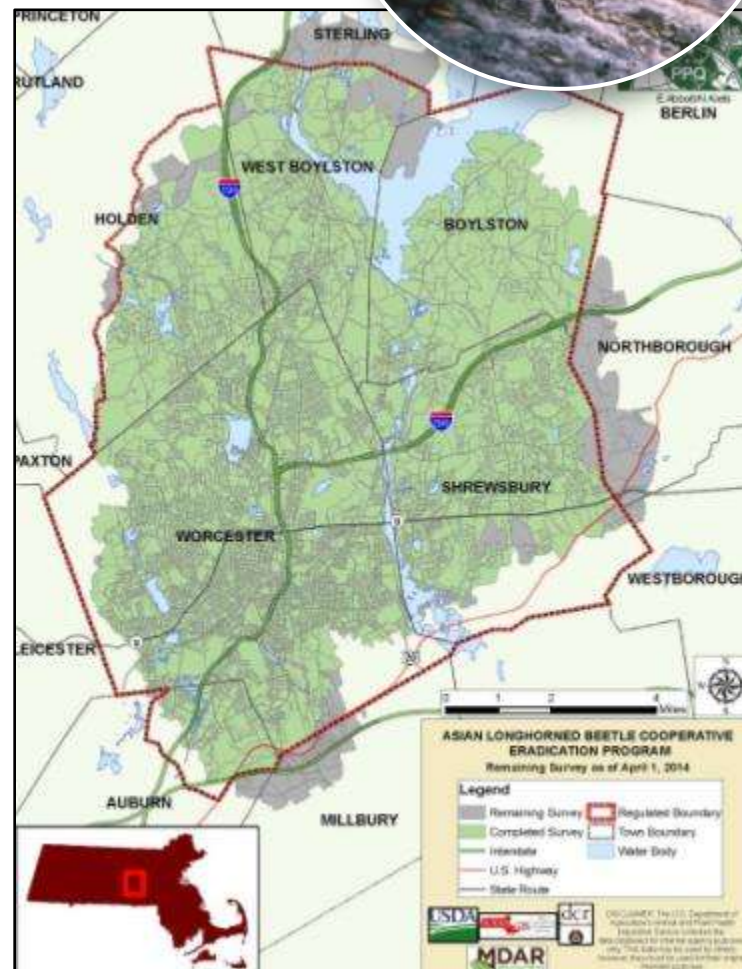
Program Update

# Asian Longhorned Beetle



## Massachusetts

- Eradication declared in Boston, May 12, 2014
- Quarantine area: 110 square miles
- Complete delimiting surveys in Worcester County this summer
- Detections of infested trees continue to dwindle



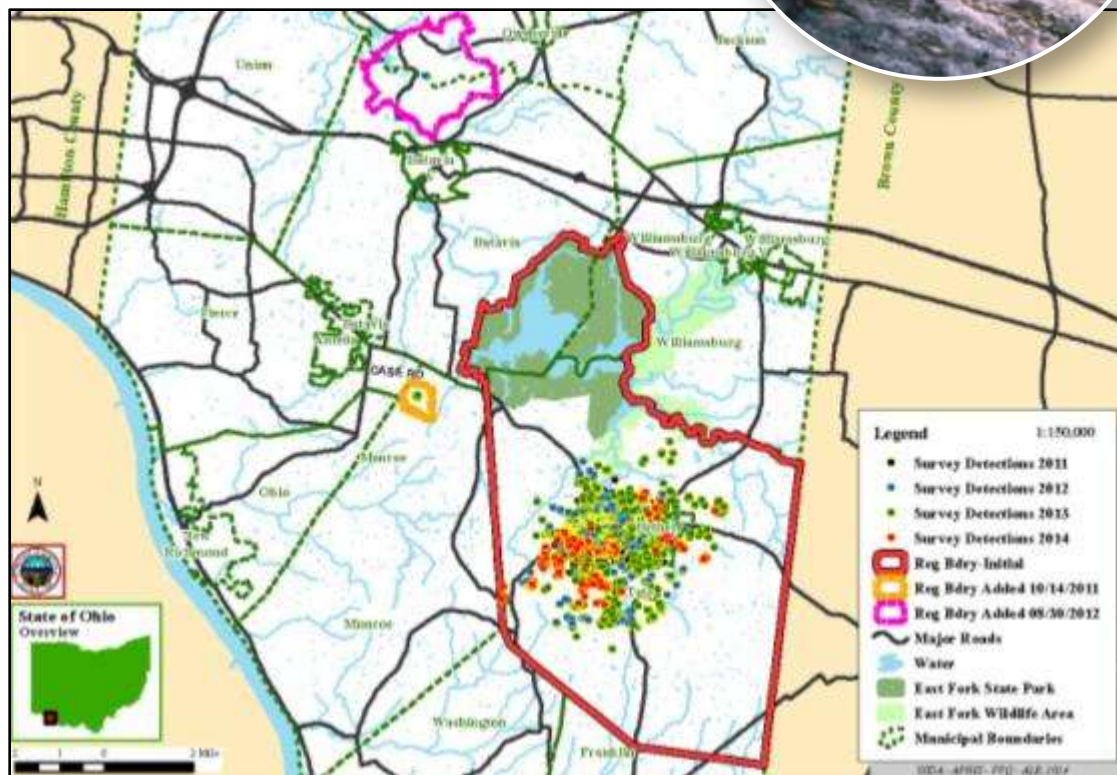


## Program Update

# Asian Longhorned Beetle

## Ohio

- Quarantine area: 61 square miles
- 1,660 infested trees detected in 2013
- 2,083 infested trees detected in 2014
- Second round of chemical treatments completed in Batavia and Stonelick Townships



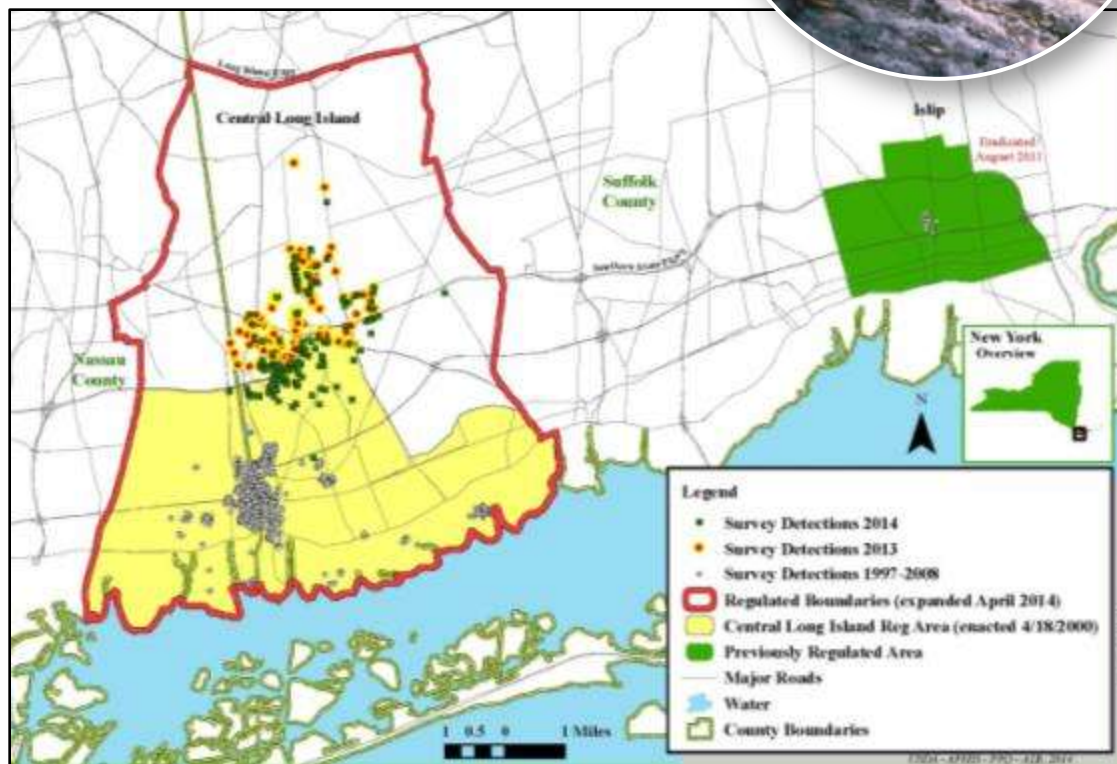
Program Update

# Asian Longhorned Beetle



## New York

- Quarantine area: 137 square miles
- 295 infested trees detected in 2013
- 202 infested trees detected in 2014
- Final surveys continue in Eastern Queens; no infested trees detected since 2003







Program Update

# Emerald Ash Borer

## Program Overview

July 2013	July 2014
20 states regulated	23 states regulated
365,573 miles <sup>2</sup> quarantined	528,854 miles <sup>2</sup> quarantined
20,000 traps/44 states	22,000 traps/39 states

## Biological control

- 2013 release season: 500,000 wasps; 17 states
- Current releases: 250,000 wasps; 16 states
- Releases continue through October, weather-dependent

Program Update

## Asian Gypsy Moth

- National Asian defoliating moth survey in eight states
  - AK, CA, MN, NC, OK, OR, UT, and WA
- Precise delimiting response: McAlester, OK
  - Total area trapped: 216 square miles
- Recent detection: North Charleston, SC





# Proposed 2015 Funding

(\$s in 000s)

Plant Protection and Quarantine	FY 2014 Enacted <sup>1</sup>	FY 2015 President's Budget	FY 2015 House Mark-up	FY 2015 Senate Mark-up
AQI (appropriated)	26,900	26,900	26,900	27,234
Cotton Pests	12,720	9,055	11,520	11,575
Field Crop and Rangeland	8,826	8,826	8,826	8,883
Pest Detection	27,446	27,446	27,446	27,587
Plant Protection Methods Development	24,549	20,549	24,549	20,686
Specialty Crop Pests	151,500	137,393	156,500	152,667
Tree & Wood Pests	54,000	45,392	47,417	54,304
<b>Total</b>	<b>305,941</b>	<b>275,561</b>	<b>303,158</b>	<b>302,936</b>
<b>Change from Previous Year (\$)</b> <b>(%)</b>		<b>-30,380</b> <b>-9.93%</b>	<b>-2,783</b> <b>-0.91%</b>	<b>-3,005</b> <b>-0.98%</b>

<sup>1</sup> This does not include GP 748 (\$20 million for Citrus Greening MAC).





# Proposed 2015 Funding

(\$s in 000s)

Plant Protection and Quarantine	FY 2014	FY 2015	FY 2016	FY 2017
Farm Bill Section 10.007				
Plant Pest and Disease Management and Disaster Prevention Programs	57,500	57,500	57,500	57,500
National Clean Plant Network	5,000	5,000	5,000	5,000
<b>Total, Farm Bill Section 10.007</b>	<b>62,500</b>	<b>62,500</b>	<b>62,500</b>	<b>62,500</b>

For FY 2018 and thereafter, funding will increase to \$75 million annually.