



PPQ Mobile Data Collection

Providing options for domestic programs to move program activities from paper and pencil collection and management to mobile technologies



PPQ Workshop to Showcase Four Collection Tools

- **In September PPQ hosted a domestic data collection workshop to showcase four data collection tools**
- **PPQ domestic data program leaders and SPHDS attended the workshop**
- **Cross functional workgroups for each domestic data program represented were asked to evaluate each tool for applicability for use in their program**
- **Domestic programs were asked to work across state lines when identifying mobile tools**

Four collectors



IPHis Data Collector



Citrus Health Response Program (FL, TX)



Collector for ArcGIS



Asian Gypsy Moth (AL, CO, GA, ME, MN, MO, MS, NM, OK)



Grasshopper/Mormon Cricket (11 western states)



ROAM



Asian longhorned beetle (MA, NY, OH)



eTRAP



Fruit Fly (FL, PR)

IPHIS Data Collector

Targeted pest programs: Works for any pest program in IPHIS

Programs Using: Citrus Health Response Program (CHRP), Asian Citrus Psyllid (ACP)

Operating system(s): iOS, Windows (PC, tablet)

Platforms: iDevices (iPad recommended in tough case) and Windows 8.1 tablets (ToughPad recommended)

Customizable: Yes, uses the IPHIS pest program template

Direct connection to IPHIS: Yes

GPS navigation to traps: Yes, with iPad and ToughPad. Non-GPS enabled devices need to use the downloadable base maps for point and click functionality

Contact for more information: Steven A. King,
Steven.A.King@aphis.usda.gov



Collector for ArcGIS

Targeted pest programs: General and customizable for most pest programs

Programs Using: Asian Gypsy Moth and Grasshopper/Mormon Cricket

Operating system(s): iOS, Android, Windows (PC, tablet)

Platforms: Windows laptop, Windows/Android/iOS tablet or smart phone, etc., with a suggested rugged case

Customizable: Yes

Direct connection to IPHIS: No

GPS navigation to traps: Yes



IntraMaps ROAM

Targeted pest programs: Asian Longhorned Beetle (ALB) but could be modified for other pest programs

Programs Using: ALB

Operating system(s): Windows (PC, tablet)

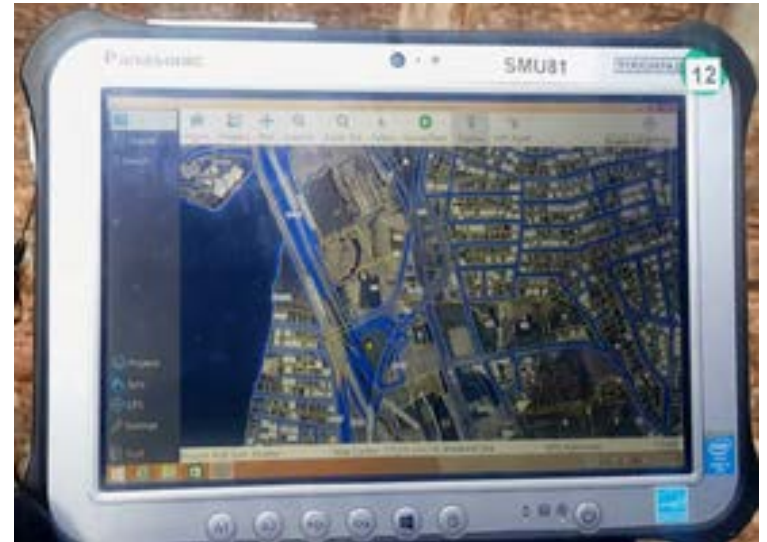
Platforms: Windows 8.1 Tablets (Ruggedized with GPS provides optimal performance)

Customizable: Yes

Direct connection to IPHIS: No

GPS navigation to traps: Yes, with ToughPad. Non-GPS enabled devices need to use the downloadable base maps for point and click functionality

Contact for more information: ALB ROAM Team, Alb_ROAM_ConfigTeam@aphis.usda.gov





eTRAP

Targeted pest programs: Fruit Fly program, but could be modified for other pest programs

Programs Using: Florida, Puerto Rico, US Virgin Islands Fruit Fly program. Texas Fruit Fly program will be migrating to it during the spring of 2017

Operating system(s): iOS

Platforms: iPad (preferably in a rugged case)

Customizable: Yes

Direct connection to IPHIS: No

GPS navigation to traps: Yes

Contact for more information: A.J. Freda,

Arthur.J.Freda@aphis.usda.gov





Began Narrowing Available Mobile Tools and Introducing them at Plant Board Meetings



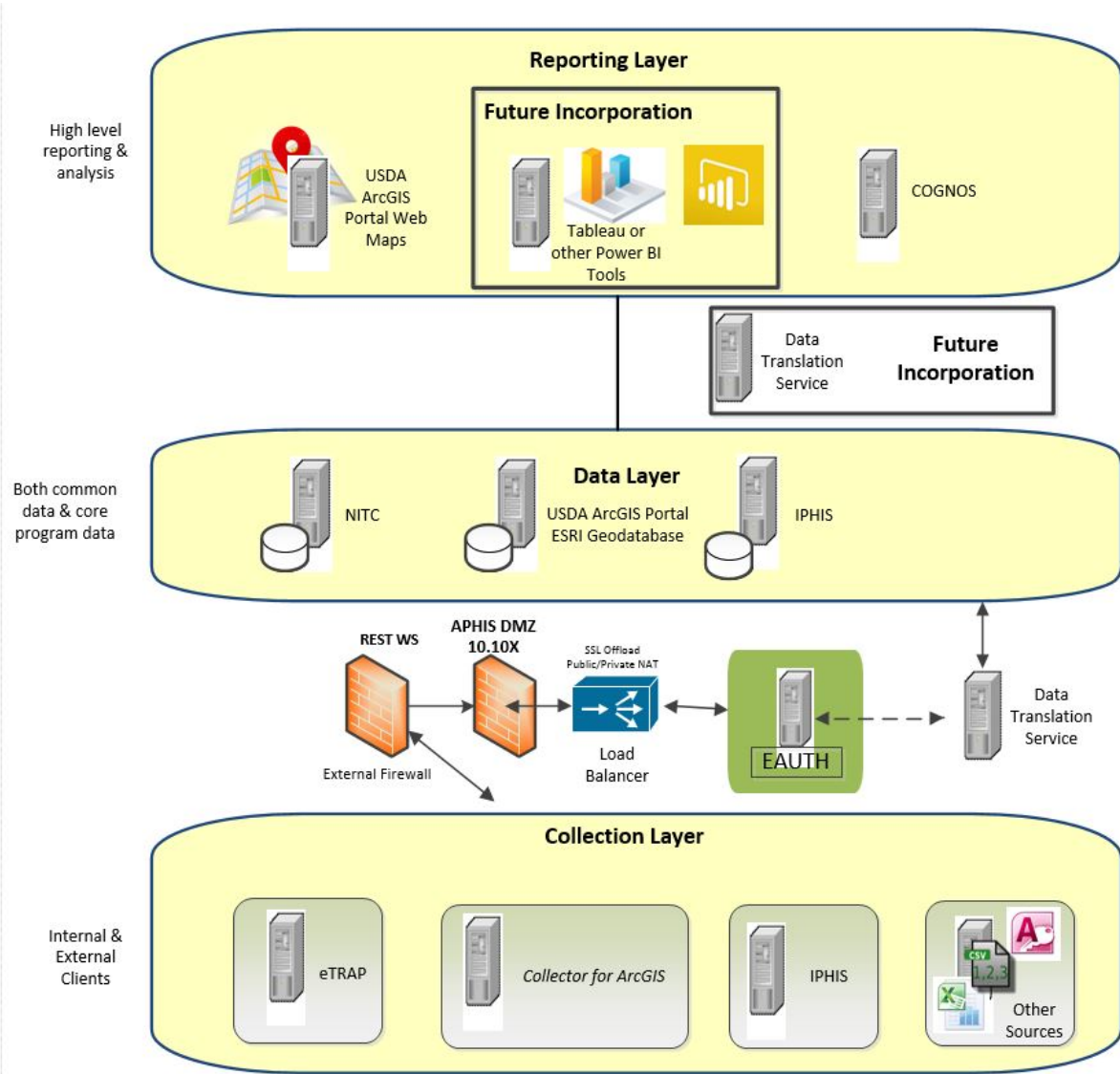
IPHIS Data Collector



Collector for ArcGIS (Esri Collector)



eTRAP





Working to Overcome Challenges

- **Abiding by the Federal Regulations governing Information Technology acquisition, development and deployment**
- **Abiding by the Federal Regulations regarding data – collection, retention, and sharing**
- **User acceptance of tools**
- **Lifecycle replacement in an environment of fast moving technology innovation**



Began Deploying

- **For the domestic programs that selected a mobile collection tool, we began providing hardware and conducting training to use the applications this winter and spring.**



CMA CGM

CMA CGM MOLIERE



Adoption of Mobile Technologies Keeps Evolving

- **Identify and stabilize tools available**
- **Deploy mobile technologies for all domestic programs**
- **Assist states with collectors where needed**
- **Develop transfer protocols where needed**
- **Simplify and stabilize domestic data base**
- **Create one data layer location where all domestic program data can be stored**
- **Work with cooperators to build a complete domestic data repository with reporting capabilities**



Mobile Solutions Advisory Team:

A.J. Freda – PPQ BISSM

Adam Brookbank – PPQ FO DART

Anthony Man-Son-Hing – PPQ FO NOM

David Bartels – PPQ FO DART

David Kowalski – PPQ FO DART

David Petendree – PPQ FO PPQ Officer

David Royal – PPQ FO DART

Eugene Pepper – PPQ FO PPQ Officer

Greg Rentschler – PPQ FO SPHD

Gregory Aydelotte – PPQ FO Domestic Coordinator

Jamie Perrie – PPQ FO DART

Jarred Driscoll – NPB

Julia Harrell – PPQ FO DART

Laura O'Gan – PPQ FO DART

Lauren Langston – PPQ FO DART

Lisa Kennaway – PPQ S&T

Marco Munoz – APHIS

Mark Crane – PPQ FO DART

Patrick McPherren – PPQ FO SPHD

Rick Chubb – PPQ BISSM



NPB Representatives:

- **2 conference calls**
- **Began action plan**

Joe Collins
Aurelio Posadas

Chris Logue, christoper.logue@agriculture.ny.gov
Sherry Aultman, saltmn@Clemson.edu
Ian Foley, ifoley@mt.gov
Dan Kenny, dkenny@agri.ohio.gov



STRATEGIC ACTION DESCRIPTION

- ***Define success***
- ***Inventory***
 - **Domestic Data Collection Tools – Hardware and Software - Federal and State**
 - **Domestic Data Collection databases – data location, software, database identification and architecture – Federal and State**
 - **Data fields and/or data elements required for each domestic program (these will eventually be in the data store)**
- ***Identify States that need Information Technology data transfer protocols***
- ***Develop a communications plan that explains intent of domestic data store and process to engage SPHDs and SPROs for domestic data store***
- ***Evaluate***
 - **Needs for data collection tools**
 - **Needs for IPHIS or data layer training**
- ***Develop an implementation plan to assist PPQ with handshake protocol, tool deployment or other data collection or data identification needs***



Savannah, NPB 2017